

If you don't read anything else... **READ THIS**

This is a **short-cut document** for installing SysTrack 3.5. Many of the “obvious” selections have been omitted to keep this document as short as possible. For detailed information on the features and functions of SysTrack, install SysTrack and use the online help system.

The SysTrack Product Architecture

The SysTrack product architecture consists of one or more SysTrack “deployment trees”, each of which operates independently. At the head of each such tree is a machine called the “master system”. This system, which may be any system based on a Windows NT platform, is responsible for the deployment of the SysTrack agents onto systems within that tree.

The structure of the tree that you create is determined using the SysTrack Deployment Tool. Once you have drawn the tree that you desire using this tool, the SysTrack agent on the master system deploys software and configuration instructions necessary to accomplish the goal tree structure.

Each monitored system in your SysTrack tree has an associated database. For most systems, this is usually a local Microsoft Jet database. You may also use MSDE, SQL Server and Oracle databases. SQL Server and Oracle databases are not included with SysTrack. Child systems in the SysTrack tree periodically “condense” information from their local database to their parent system’s database. The structure of the tree that you draw with the Deployment Tool determines the child-parent relationships. SysTrack is very flexible in this regard. If you install multiple SysTrack trees, you may use the Deployment Tool’s “uplink” feature to link entire trees to higher level trees. This allows transparent navigation across tree boundaries using the SysTrack Analysis Tools.

The SysTrack master install program starts automatically when you insert the SysTrack CDROM. Use this program to install the SysTrack image onto your master system. If the setup does not automatically run the “launch.exe” program to start the installation. Once you have installed the master system, all further installations (including both SysTrack agents for monitored systems and SysTrack Administrative Tools) are installed by running programs from the master system’s image. You will not need the SysTrack CDROM after you complete the master system installation.

The SysTrack master install program allows you to install remotely to other systems. This is particularly convenient for handling remotely managed sites. After installing a master system at the remote site via your WAN (a one time process), all further agents at that site install from the local master system image. All SysTrack Administrative Tools are designed to allow both local and remote operation.

Brief Installation Instructions for SysTrack

By completing the following installation steps, you will set-up a SysTrack master install which is the top-level database for the local environment. When the install is complete, this computer will have the SysTrack Agent and master setup files installed on this system. It will also have the SysTrack Deployment Tool installed for deploying the SysTrack agent and configuring settings for SysTrack agents on monitored systems and the SysTrack Analysis Tools installed for monitoring and managing systems.

To begin the process, **insert the SysTrack CD**. The CD will auto-start. If you have downloaded the program from the Lakeside Software, Inc. website, then you will need to extract the downloaded executable to a temporary folder and run "launch.exe".

Note: System Requirements:

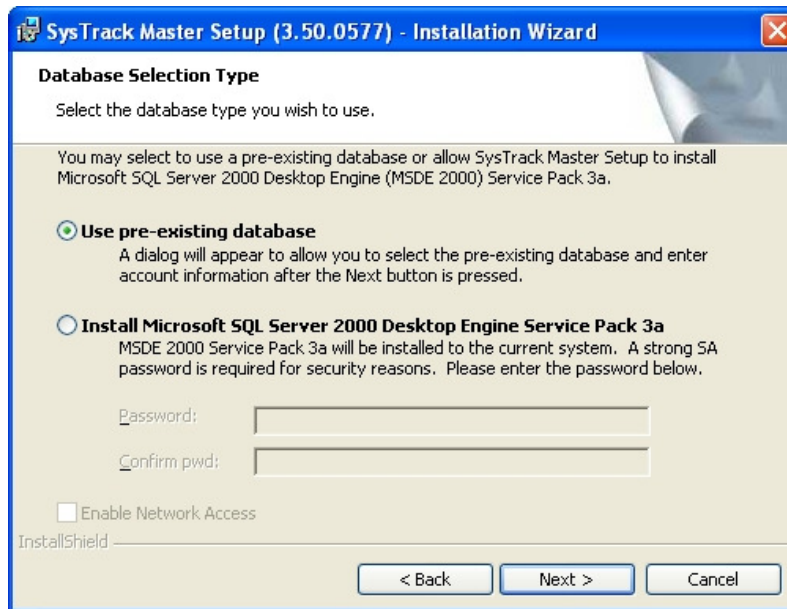
1. Windows NT-based Platform
2. MDAC 2.5 or later database drivers (additionally the master system requires MDAC 2.6)
3. WMI 1.5 or later
4. MSDE (installed by default), SQL Server, or Oracle for the master system database

Note: If MDAC or WMI are not current or not installed, SysTrack will install or update them using Microsoft's installation programs. These install programs may require a reboot, but the reboot will **NOT** automatically occur.

An InstallShield wizard will appear. Choose to "Install Products". Choose to install all three products.



Please choose all of the defaults on all three of the installations. The item that will need your attention is the master database. The installation process will automatically install MSDE, if you choose. You may also select an existing MSDE, SQL Server or Oracle database.



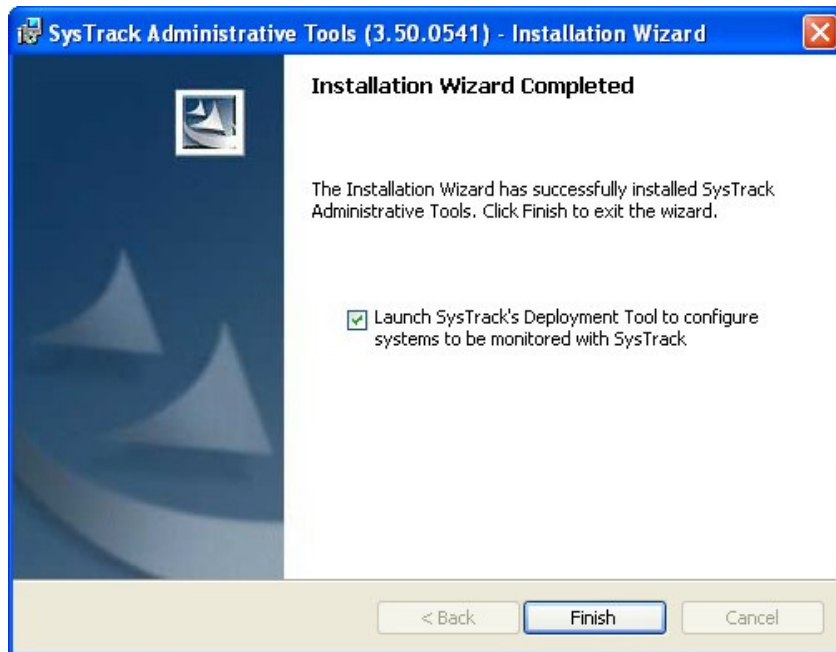
Note: SysTrack will require a reboot after the installation of the master setup files.

Installation of SysTrack Administrative Tools

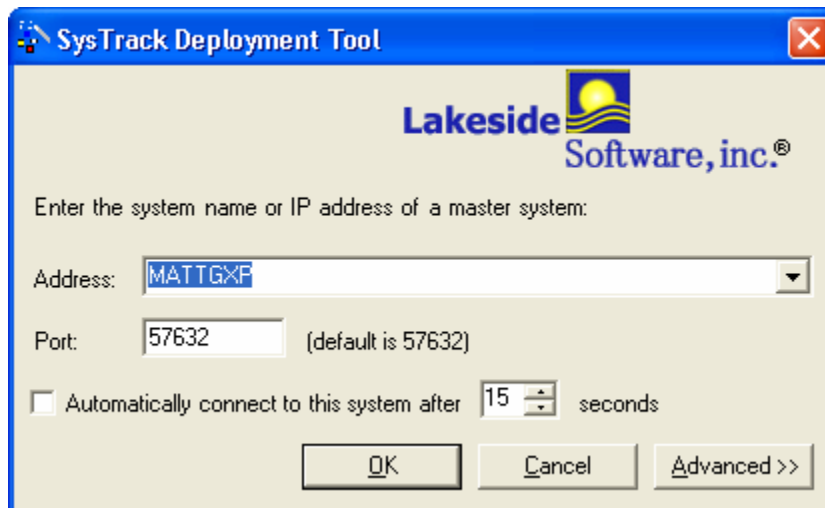
At the end of the master install, a reboot is required. When the reboot is complete the SysTrack Administrative Tools installation will start automatically. You can start the Administrative Tools setup program from \Program Files\SysTrack\Install\Setup.exe. You can also use this program to install the Administrative Tools onto other systems in your enterprise.

Use of the SysTrack Deployment Tool

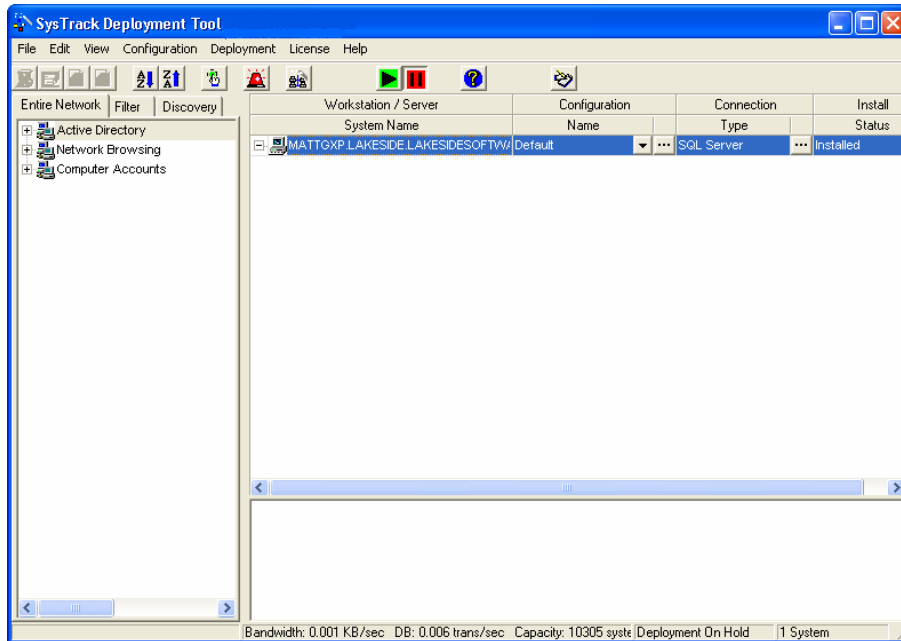
At the end of the Administrative Tools setup, you may choose to automatically start the Deployment Tool. Use this tool to select systems to be monitored and to configure options for these systems.



When you start the Deployment Tool, the tool connects automatically to the tree that you last selected. You will see a selection dropdown and port on the screen.



Drag/drop systems from the left-hand pane (that shows discovered systems) into the right-hand pane. You can probably use the default configurations provided. You should use the Deployment Tool's menu option Configuration->Alarming and Configuration... to establish alarm limits, notifications and actions, and Agent configuration settings. Then assign each monitored system one of the alarm profiles that you create. Turn on the deployment process using the toolbar "pause/play" button to cause the SysTrack agent on the master server to start deploying software. Deployment status is shown in the status bar.



Deployment of agents to Windows NT-based systems is fully automatic, and typically will complete in a few minutes simply by pressing the green “play” button in the tool bar. On Windows 9x-based systems, you need to start the SysTrack client installer on each system to be monitored. To accomplish this you will need to copy LsiCins.exe (C:\Program Files\SysTrack\Agent\LsiAgent folder by default) to the child system and run the following command...

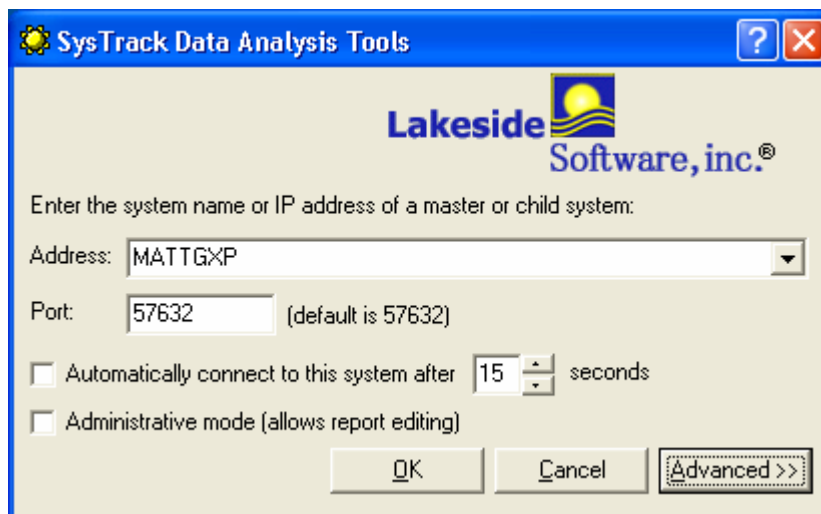
```
LsiCins -master <FQDN of master system> -port 57632
```

You may also perform a push install via login script or via Microsoft SMS or another software distribution tool. Once the agent is deployed, all configuration changes and software updates are automatic and are directed through the Deployment Tool.

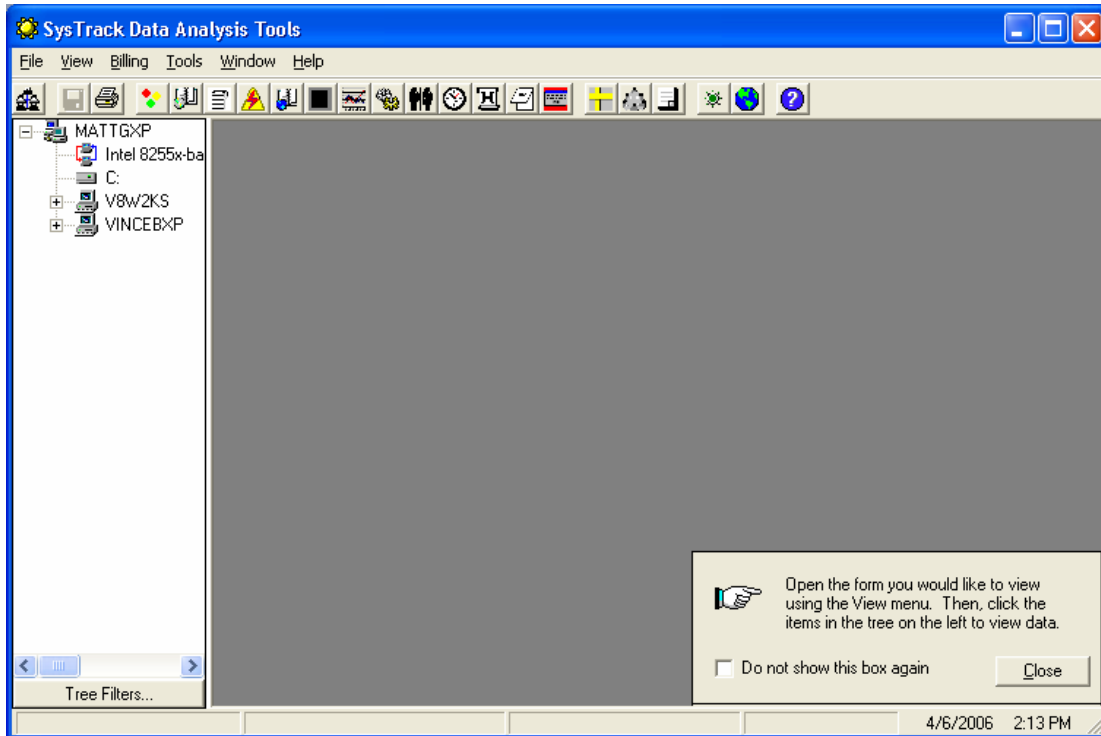
Use of the SysTrack Analysis Tools

The SysTrack Analysis Tools provide the reporting user interface for SysTrack. Installation is provided as part of the Administrative Tools (see above).

When you start the Analysis Tools, the tools connect automatically to the tree that you last selected. You will see a selection dropdown and port on the screen.



The main Analysis Tools screen has a left-hand tree view that shows the composite content of all SysTrack databases. Use this pane to select which databases, systems, disks, and network interfaces you wish to analyze. The View menu provides access to forms, which refer to the left-hand tree view to determine the items in which you are interested. Some forms automatically select the necessary tree items, and hence do not require use of the tree view.



Where to Go From Here

For detailed information on the features and functions of SysTrack, install SysTrack, then **see the HELP FILES**. You can also use the F1 key (or “?” button) for field-by-field help in both the Deployment Tool and Analysis Tools. Note that there are two sets of online help documentation – one in the Deployment Tool and one in the Analysis Tools. The lakesidesoftware.com knowledge base is located at <http://www.lakesidesoftware.com/kb/> and is an excellent source of information to diagnose installation or operational issues as well as providing some helpful hints as to how the two components of SysTrack operate.

Please contact Lakeside Software if you have any questions or concerns.

Lakeside Software Sales	248-738-1138	sales@LakesideSoftware.com
Lakeside Software Support	248-738-0885	support@LakesideSoftware.com

(M – F) 8:30 am – 5:30 pm Eastern